

Pre-instruction Literature

On Receipt

It is our policy to promote safe delivery of all orders. This product shipment has been thoroughly checked, packed and quality certified before leaving our factory.

Visible Loss or Damage

If any of the goods called for on the bill of lading or express receipt are damaged or the quantity is short, do not accept them until the freight or express delivery agent makes an appropriate notation on your freight bill or receipt.

Concealed Loss or Damage

When a shipment has been delivered to you in apparent good condition, but upon opening the packaging if any loss or damage has taken place while in transit, inform the carrier's agent / A. O. Smith representative immediately.

About this manual

This manual is a guide to good practice for operating and periodic maintenance of the A. O. Smith X6⁺ RO Water Purifier.

This does not contain the full servicing procedures necessary for continued successful operation of this product. The services of A. O. Smith Company Authorised Service Technician must be employed periodically on the same. Do not operate before reading manual supplied with this product.

Please follow instructions in this manual to ensure personal safety and proper operation of this product. A. O. Smith assumes no liability for installation or servicing performed by any unauthorised personnel. Always install, operate, inspect and maintain this product in accordance with all applicable standards. Please store this user manual carefully for any future reference.

Disposal of this Product

(Waste Electrical and Electronic Equipment)



This marking on the product, accessories or User Manual indicates that the product and its electronic accessories (e.g. Remote, batteries and other replaceable electronic accessories) should not be disposed of with other household waste at the end of their working life. To prevent possible harm to the environment or human health from uncontrolled waste disposal, please separate these items from other types of waste and recycle them responsibly to promote the sustainable re-use of material resources.

Household users should contact their local government office, for details of where and how they can take these items for environmentally safe recycling. This product and its electronic accessories should not be mixed with other commercial wastes for disposal.

1

General Instructions

Safety

Your safety and the safety of your loved ones is paramount. There are several safety related messages in this manual, which have been provided during various steps such as the installation, operation and maintenance of your A. O. Smith X6⁺ RO Water Purifier. These messages point out potential hazards and also educate on how to reduce any potential risks. Please always read and follow all safety messages as provided in this user manual.

	This is the safety alert symbol. This symbol alerts you to potential hazards that can hurt you and others. All safety messages will follow the safety alert symbol and either the word "DANGER" or "WARNING".
	Indicates an imminently hazardous situation which, if not avoided, will result in death or serious injury.
	Indicates a potentially hazardous situation, which if not avoided, could result in death or serious injury.
	Indicates a potentially hazardous situation which, if not avoided, may result in minor or moderate injury or property damage.

IMPORTANT

These instructions have been written as a guide for the proper installation and operation of your Water Purifier. A. O. Smith will not accept any liability where these instructions have not been followed. However, for your safety and to avoid damage caused by improper installation, it is recommended that Water Purifier must be installed by A. O. Smith Company Authorised Service Technician.

Before proceeding with the installation instructions:

1. Inspect the Water Purifier and its component parts for possible damage. Do Not install or attempt to repair any damaged component parts. If you detect any damage in the Water Purifier, please contact the dealer where the Water Purifier was purchased or call A. O. Smith Customer Care Centre.
2. Verify that the voltage being supplied corresponds to that which is mentioned in the A. O. Smith X6⁺ RO Water Purifier manual.

2

Key Features of your A. O. Smith X6⁺ RO Water Purifier



Baby Safe Water with 8-Stage Purification

8S TECHNOLOGY: Pre-filter + Sediment filter + ART™ MAX (Advance Recovery Technology™) + SCB filter* + Patented Side Stream RO Membrane + MIN-TECH (Mineraliser Technology) + ZX Double Protection Dual Filter** (Silver Activated Post Carbon block + SCMT). In A. O. Smith X6⁺ RO Water Purifier 100% of the water passes through the RO Membrane and Double Purified by SCMT.



Double Protection with RO + SCMT (Silver Charged Membrane Technology)

SCMT is an additional stage of purification to prevent any potential secondary microbial contamination post RO purification. Double protection ensures purified and healthy water.



Alkaline Min-Tech

Alkaline Min-Tech technology ensures water in pH range of 7 to 8.5 and also it adds back essential minerals such as Calcium and Magnesium back to purified water.



Digital Display

Digital display for simple and intelligent display of information



Advance Alert Technology

Indicates in advance when the RO membrane and other filters need to be changed.

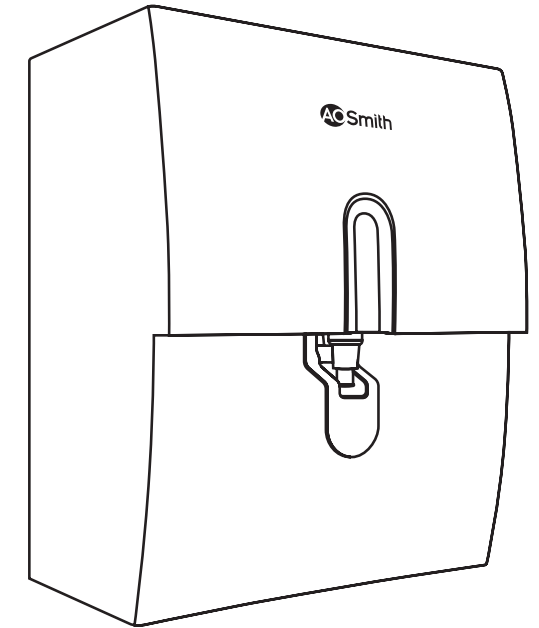
* Patent Applied



Product colour and image shown may vary from the actual product.
Part No. : 335300-082_A Date: 26-08-2022



Water Purifier
X6⁺



User Manual

Introduction

A. O. Smith X6⁺ RO Water Purifier uses one of the latest technologies that is used in water purification process. A. O. Smith X6⁺ RO Water Purifier works under the principle of RO (Reverse Osmosis) technology which is found to be one of the most effective process. In this process water under pressure is passed through a semi-permeable membrane. Purified water is collected for drinking in a storage tank and impurities in the water are flushed to the drain.

Why water purification is important?

Water purification, today is essential due to the presence of harmful contaminants present in the water supply. Rapid urbanisation and speedy industrial growth have led to significant pollutants and contaminants being found in the water supply. Below is a list of some of the harmful contaminants found today in the water supply which if consumed in excess can be detrimental to human health.

- TDS (Total Dissolved Solids) like Nitrates, Chlorides, Sulphates etc.
- Pesticides and VOC (Volatile Organic Compounds).
- Heavy metals like Mercury, Arsenic, Lead, Chromium, Cadmium etc., imbalanced pH.
- Micro-organisms such as pathogenic bacteria, virus, protozoa and cysts.

A. O. Smith X6⁺ RO Water Purifier removes excessive TDS (Total Dissolved Solids) in water by more than 95%. A. O. Smith X6⁺ RO Water Purifier reduces heavy metals, removes pathogens and balances the pH value. By this, it ensures you safe and great tasting water.

How does the A. O. Smith X6⁺ RO Water Purifier work?

A. O. Smith X6⁺ RO Water Purifier has 8 stages of purification system, wherein the water is passed through the various stages and progressively filtered to get purified water which is stored in the in-built storage tank.

Stage 1 – Pre-filter

The Pre-filter is used to remove physical contaminants such as dirt, dust, soil particles, turbidity present in the water. This improves the life of the Sediment filter.

Stage 2 – Sediment filter

The Sediment filter is used to remove fine and coarse physical contaminants present in the water. This improves the life of the ART™ MAX.

Stage 3 – ART™ MAX (Advance Recovery Technology™)

The ART™ MAX (Advance Recovery Technology™) is scale control media which conditions the water to reduce scaling potential in water.

Stage 4 – SCB filter*

The SCB filter* uses carbon block which reduces harmful chemicals including pesticides, volatile organic compounds, residual chlorine etc. It also adsorbs bad taste and odour causing organic compounds from water.

Stage 5 – RO (Reverse Osmosis) membrane

RO membrane contains semi-permeable membrane wherein the water is passed through the semi-permeable membrane to remove TDS (Total Dissolved Solids) and heavy metals like mercury, arsenic, lead, chromium, cadmium etc. It also removes micro-organisms like bacteria, virus, protozoa and cysts.

3

Stage 6 – Alkaline Min-Tech

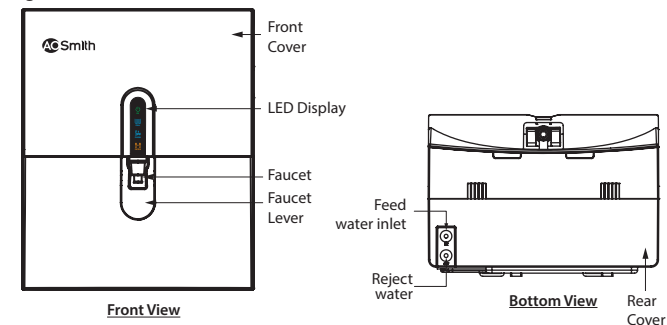
This is an advanced filter with balanced source of essential minerals like Calcium and Magnesium which helps to keep our body healthy. It enhances the taste and maintains the sweetness of water. The advanced pH balancing technology will maintain the pH of the water as per standards. The odour control will give the optimum protection to the pure water and make water free from trace odour and increase the taste.

Stage 7 and Stage 8 – ZX Double Protection Dual filter**

This is a dual filter where water is passed through Post Carbon block which acts as polisher and enhances the taste of water. In the final stage water is passed through SCMT (Silver Charged Membrane Technology) filter which ensures double purification of water making it Safe and Healthy for drinking.

* Patent Applied

Figure 1

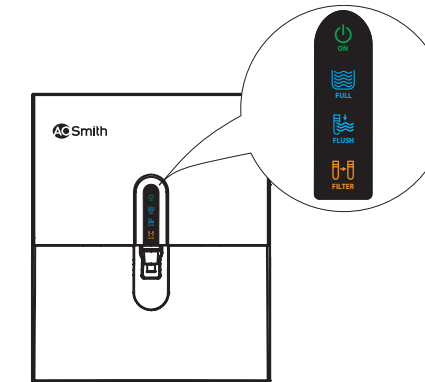


Note: The Ball valve comes along with the product as standard accessories.

4

Function of indicators

Figure 2



Power ON indicator

This indicates, that the system is switch ON/OFF condition.

Tank full indicator

This indicates that the Water Purifier tank is full.

Auto flush indicator

This indicates flushing is in progress. Every time the water purification process is activated the auto flushing mechanism cleans the RO membrane. It enhances the life of RO membrane.

Filter change indicator

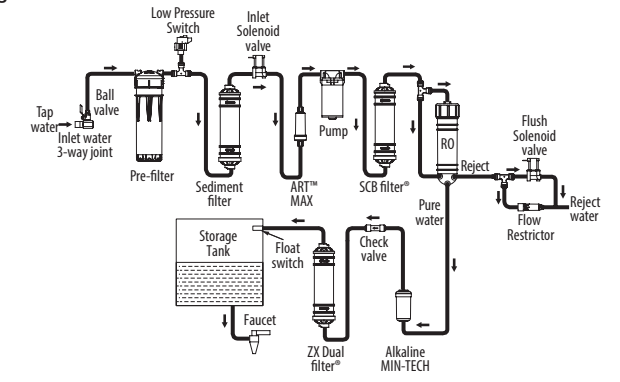
This indicates that the RO membrane and filters need to be replaced.

- Filter change indicator starts blinking indicating that the RO membrane and filters life is reaching its end time.
- When RO membrane and filters life reaches its end, Filter change indicator keeps on blinking and the unit stops functioning. The unit stops functioning, approximately 1 month after it starts blinking.

5

Water flow

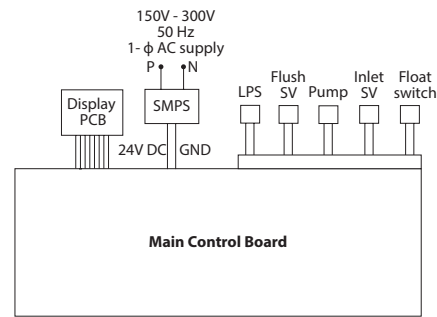
Figure 3



6

Electrical Diagram

Figure 4



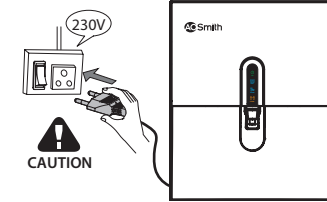
Safety Precautions

Electrical Safety

Even though these products are designed keeping highest safety standards in mind, there are certain Do's and Don'ts which need to be followed while using these products.

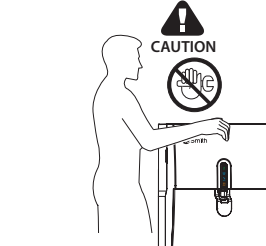
Power plug must be used with a 230 V outlet. It is recommended to connect the product to the power supply only with the plug that is provided with the purifier. Do not pull out or touch power plug with wet hands to avoid electrical shock.

Figure 5



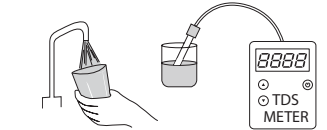
Product should be installed only by A. O. Smith Company Authorised Service Technician. Do not open the purifier for cleaning the filters or for any part replacements. This must be done only by A. O. Smith Company Authorised Service Technician.

Figure 6



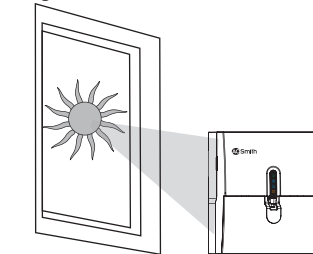
Make sure that the feed water is tested before installation. Do not install the product if the TDS and Hardness are more than that prescribed in the recommended feed water conditions (Refer page 14).

Figure 7



Install the product away from direct sunlight.

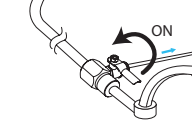
Figure 8



How to use

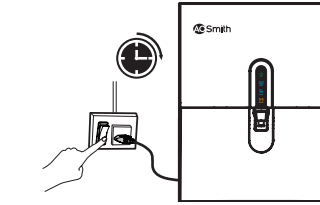
1. Turn ON the water connection through the ball valve.

Figure 9



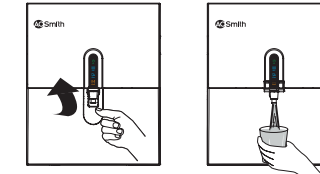
2. Switch ON the power supply.

Figure 10



3. To dispense water continuously, lift up the water faucet lever for the continuous water flow.

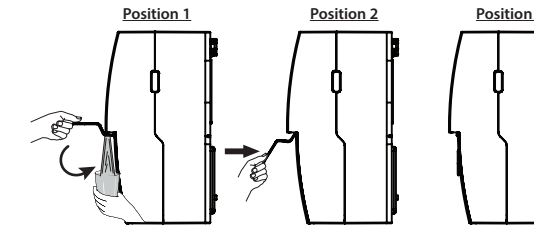
Figure 11



Note: Water is dispensed continuously only by lifting the faucet lever upwards.

4. To stop the water flow, pull down the water faucet lever to position 2 slowly and then to initial position. This avoids splashing of water.

Figure 12



Troubleshooting

Your A. O. Smith X6⁺ RO Water Purifier may not function at its desired capability if used incorrectly. This may not necessarily mean that the product is faulty. For instances like these, please follow the steps given below to troubleshoot the problem without the help from a certified technician. If the problem still persists, please call Customer Care Centre immediately.

Problems	Possible Cause(s)	Solution
Change in water taste.	Has the purified water been stored in the tank for long time?	Drain the stored water from the storage tank through faucet.
	RO membrane / filters may require replacement.	Call Customer Care Centre for RO membrane / filters replacement.
	Has the raw water quality changed?	Call Customer Care Centre.
	Check if there is no water flow through reject line.	Switch OFF the Water Purifier and call Customer Care Centre.
Decreased flow of purified water.	Check whether the tap/ ball valve is closed.	Open the tap/ball valve.
	RO membrane / filters may be clogged or damaged.	Call Customer Care Centre for RO membrane / filters replacement.
Less / No reject water.	Check if the reject water tube is bent.	Clear the bent in the reject water tube.
	Check if the reject water tube is blocked.	Switch OFF the Water Purifier and Call Customer Care Centre.
Less/No purified water.	Check whether there is water supply in the tap.	If not, take the help of a plumber to set it right.
	Check whether tap/ball valve is closed.	Open the tap/ball valve.
	Check if either Filter change is blinking.	Call Customer Care Centre for RO membrane/filters replacement.
	None of the above.	Call Customer Care Centre.

Tank full LED blinks continuously 	Over flow error.	Switch OFF the Water Purifier and call Customer Care Centre.
Power LED blinks continuously 	Low pressure alarm is triggered indicating that the system input water pressure is not in the required range.	Check feed water supply to the purifier. If problem still persists, switch OFF the Water Purifier and call Customer Care Centre.
Flush LED blinks continuously 	RTC error.	Switch OFF the Water Purifier and call Customer Care Centre.
Filter change LED blinks and unit is functioning 	RO membrane or filters life is about to end.	Switch OFF the Water Purifier and call Customer Care Centre for RO membrane or filters replacement.
Filter change LED blinks and unit is not functioning 	RO membrane or filters life ends.	Switch OFF the Water Purifier and call Customer Care Centre for RO membrane or filters replacement.

Note: Call Customer Care No. 1800-103-2468/1860-500-2468.

Technical Specifications

Model	A. O. Smith X6 ⁺ RO
Product Dimensions (H x D x W)	460 mm x 270 mm x 380 mm
Net Weight	8.5 kgs (approx.)
Gross Weight	12.5 kgs (approx.)
Flow rate*	Up to 15 litres per hour
Storage tank capacity	5 litres (approx.)
Purification technology	RO (Reverse Osmosis)
8 Stage Purifying Technology	Pre-filter + Sediment filter + ART™ MAX (Advance Recovery Technology™) + SCB filter* + Side Stream RO membrane + Alkaline Min-Tech + ZX Double Protection Dual Filter** (Post Carbon block + SCMT)
Material of construction for plastic parts	Food safe, non-toxic, engineering grade plastics
Pump type	Diaphragm pump, 24VDC
Input Voltage	150 – 300 VAC, 50 Hz
Power rating (Max)	48 Watts
Pressure Rating***	5 psi to 30 psi
% Recovery**	Up to 40%
TDS rejection**	≥95% (approx.)
Input water temperature	5°C to 45°C

* Flow rate depends on variable factors such as feed water pressure, feed water characteristics and condition of the membranes and filters.

** Recovery and TDS rejection percentages also depend on variable factors such as life and condition of the membranes and filters, feed water pressure, feed water characteristics.

*** If input pressure exceeds 30 psi, a pressure reducing valve needs to be installed at the feed line. If the pressure is lower than 5 psi, a booster pump needs to be installed. Ensure you buy them from A. O. Smith Company Authorised Service Technician.

NOTICE

- Discard the first cycle of pure water, before you start using it for consumption.
- Make sure to discard the water in the storage tank if you have not used the purifier for more than 2 days.

Recommended input Feed water quality for the optimum performance of your product

Recommended Feed Water Quality	
Parameter	Limits
Total Dissolved Solids (TDS)	Up to 2000 ppm
Total hardness	Up to 500 ppm
Turbidity	Up to 5 NTU
Iron	0.3 ppm (max.)
Feed water pressure	5 psi to 30 psi
Feed water temperature	5° C to 45° C